



BUILDING
HOPE
SUMMIT COUNTY

MENTAL HEALTH MATTERS
2017-2021





OUR MISSION

Building Hope Summit County is a community-wide initiative designed to create a more coordinated, effective and responsive mental health system that promotes emotional well-being, reduces stigma and improves access to care and support for everyone in Summit County.

WE'RE ALL IMPERFECT LET'S BE IMPERFECT TOGETHER

Dear Friends,

Since its inception in 2017, **Building Hope Summit County** has utilized coordination and collaboration to build a more accessible behavioral health system for everyone in our community. **Building Hope's** work centers on creating a stronger behavioral health delivery system and a community environment that is supportive of behavioral health.

We are grateful that our work has deep community support. To accomplish our mission, **Building Hope** collaborates with over 100 organizations locally, regionally and nationally including Family and Intercultural Resource Center (FIRC), the Summit Foundation, Summit County Government, Centura Health, Eagle Valley Behavioral Health, and as well as local agencies and towns.

As you will see in this report, mental health matters to the Summit County community. Our programs and impacts continue to grow as the need in our community increases and more people become open to seeking care for their mental health.

Jennifer McAtamney
Executive Director



**“BUILDING
HOPE GAVE
ME ACCESS TO
THERAPY AT
A TIME WHEN
I MAY NOT
HAVE SURVIVED
WITHOUT IT.”**

MENTAL HEALTH THERAPY SCHOLARSHIPS

Scholarships are issued to individuals who otherwise could not afford therapy. Scholarships can be accessed at any of these locations: FIRC, Summit School District, Tree Top Child Advocacy Center, SMART Team, Summit Advocates, Summit County Jail STARR, Summit Community Care Clinic, Mind Spring Health

92.5% of respondents reported they used the Building Hope scholarship issued to them to receive outpatient mental health therapy.

87.5% of respondents reported they developed techniques they can use to support their mental wellness after therapy ends.

94.3% of respondents reported that the Building Hope scholarship program provided valuable support to them.

THERAPY SESSIONS SUPPORTED THROUGH SCHOLARSHIPS



2021: **4,169 (32.3%)**

2017-2021: **9,000 (67.7%)**

102 PROVIDERS

ACCEPT BUILDING HOPE SCHOLARSHIPS



REFLECT & CONNECT CAFE

NEW IN 2020

Created for organizations in response to COVID, for people to connect and gain tips on how to thrive. Facilitated with local behavioral health providers. An ongoing program.

OVER
351
GROUPS HOSTED

OVER
1332
PARTICIPATED

CAPACITY BUILDING **SUPPORT** FOR PROVIDERS

INSURANCE PROVIDER PROGRAM

NEW IN 2020



Created to assist providers with the challenging landscape of insurance billing and payments.

40+

PROVIDERS
PARTICIPATE

5327

THERAPY
SESSIONS

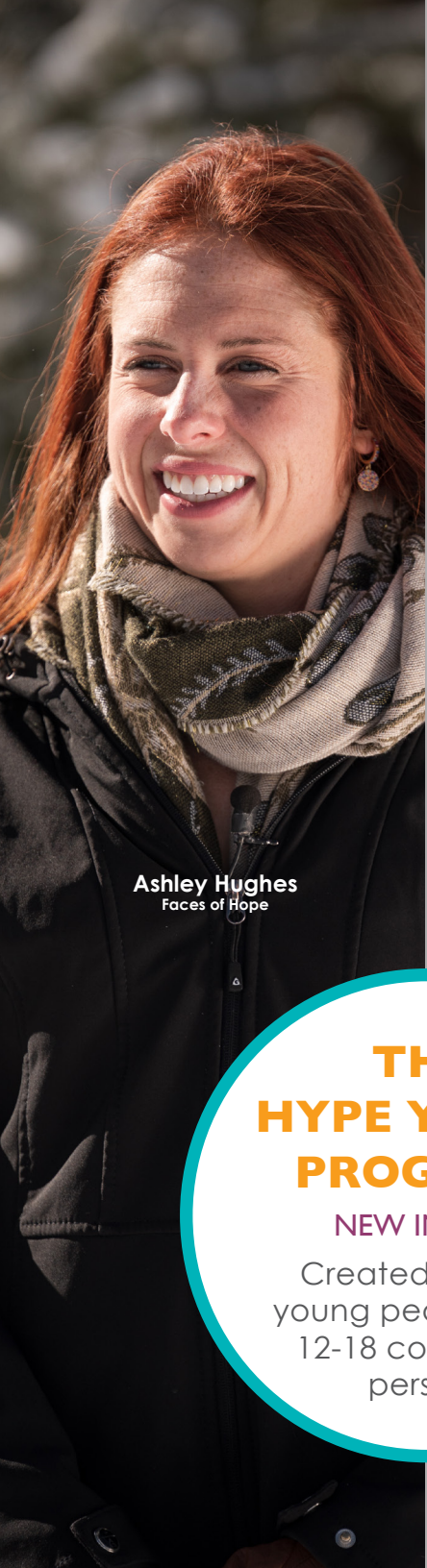
MINI GRANTS

NEW IN 2019

Over 80 grants issued to mental health providers serving Summit County for professional development and licensing supervision, as well as provider led support groups.



**“IT HAS
SAVED MY
LIFE. I WOULD
NOT HAVE
AFFORDED
THERAPY
OTHERWISE.”**



Ashley Hughes
Faces of Hope

THE HYPE YOUTH PROGRAM

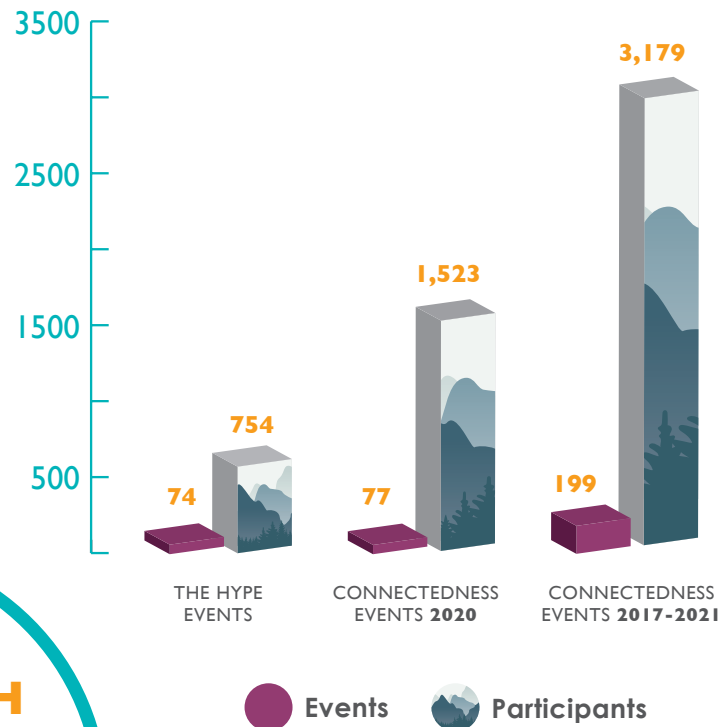
NEW IN 2020

Created to help young people ages 12-18 connect in person.

COMMUNITY CONNECTEDNESS EVENTS

Free community events to improve emotional well being and foster connection.

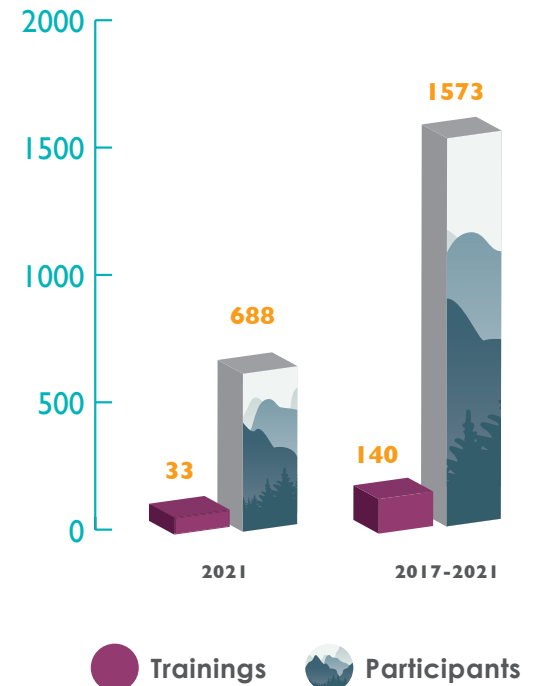
COMMUNITY CONNECTEDNESS EVENTS & THE HYPE



MENTAL HEALTH TRAININGS

To increase public awareness and education around mental health including Question. Persuade. Refer (QPR), Mental Health Navigation, Volunteer Ambassador, and Peer Support Program (new in 2020)

MENTAL HEALTH TRAININGS





FACES OF HOPE

7 Courageous individuals shared their journey with mental health struggles in 2020. Sharing about mental health has the power to heal, connect and transform.

[LEARN MORE](#)

OUTREACH PRESENTATIONS

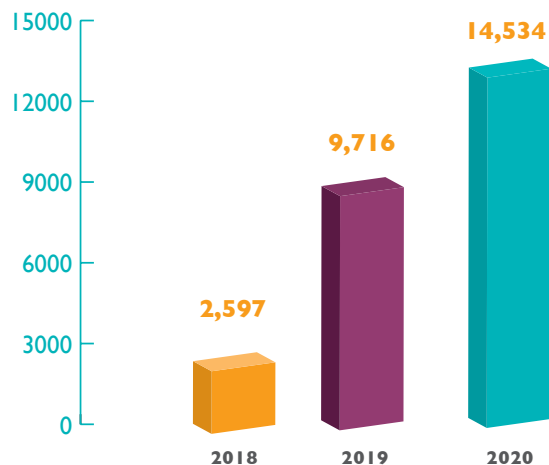
4 Impactful virtual events in 2020, including Voice of a Grieving Mother, the initiative of Heather Gard, mother of Toby who died by suicide in April 2020.

[WATCH THE VIDEO](#)

MARKETING & COMMUNITY OUTREACH

Community engagement increases awareness of mental health programs and resources.

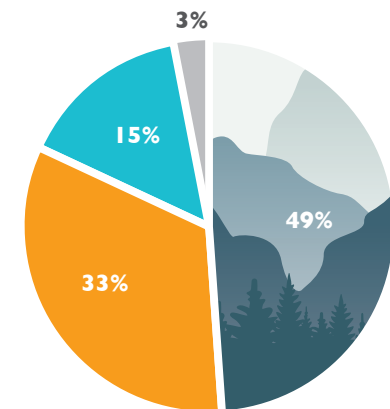
WEBSITE VISITOR TRAFFIC



13,576
SOCIAL MEDIA
ENGAGEMENTS

OVER
34%
INCREASE IN 2020

BUILDINGHOPESUMMIT.ORG



BUILDING HOPE FUNDING

