



**BUILDING**  
**HOPE**  
SUMMIT COUNTY

**MENTAL**  
**HEALTH**  
**MATTERS**

**2025**  
YEAR IN REVIEW

# WE'RE ALL **IMPERFECT** LET'S BE IMPERFECT TOGETHER

To Our Incredible Summit Community,

Living in the High Country, we learn quickly that the landscape is defined by its extremes. We experience breathtaking beauty, but we also navigate harsh winters and changing seasons. Our internal landscapes often mirror our external ones - 2025 was a year of beautiful peaks, but also difficult valleys, for many of our friends and neighbors.

At Building Hope, we know that while we cannot stop the storms from coming, we can ensure no one has to weather them alone. As I reflect on 2025, the word that keeps surfacing is *connection*.

In a year where the external noise was loud—echoing with concerns about affordability, childcare, and uncertainty about what's to come. Building Hope focused on strengthening the quiet, invisible threads that hold us together. We focused on the connection between a resident in need and a provider who can help. The connection between a struggling student and a supportive peer. The connection between a feeling of isolation and a realization of belonging.

The results of these connections are tangible. Our provider network has grown not just in numbers, but in diversity of care. We have seen a record number of residents utilizing insurance benefits for mental health, signaling a shift toward sustainable, long-term wellness. We have moved from a reactive stance to a proactive one, equipping our community leaders and parents with the tools to foster mental well-being before a crisis occurs.

This progress is a testament to you. It takes a village to raise a child, but it takes a community to heal a heart. Thank you for walking alongside us, for advocating for mental wellness, and for proving that in Summit County, hope is something we build together. Whether the days are sunny or stormy, we are here, and we are grateful to be here with you.

Thank you for being the foundation of our work at Building Hope.

*Kellyn Ender*

Kellyn Ender | Executive Director



## **OUR MISSION**

Building Hope Summit County is a community-wide initiative designed to create a more coordinated, effective and responsive mental health system that promotes emotional well-being, reduces stigma and improves access to care and support for everyone in Summit County.

# SUPPORT FOR OUR COMMUNITY



BEING  
HUMAN IS  
MESSY.

**MENTAL HEALTH  
SCHOLARSHIPS PROVIDE  
FINANCIAL SUPPORT  
FOR MENTAL HEALTH  
THERAPY SESSIONS.**

**531 scholarships issued  
in 2025**

- 56% white, 40% hispanic
- 40% male, 58% female

**212 providers now  
accept the Building Hope  
scholarship, filling gaps in  
available resources within  
the community.**



**271**

**COMMUNITY MEMBERS**

were supported in finding  
mental health services through  
Building Hope's **MENTAL HEALTH  
NAVIGATION** program.



**“BUILDING HOPE HAS MADE IT  
POSSIBLE FOR PEOPLE IN SUMMIT  
COUNTY TO ACCESS THERAPY WHEN  
THEY COULDN'T AFFORD TO PAY  
OUT OF POCKET AND HAD  
NO OTHER OPTIONS.”**



# LEARNING AND HEALING TOGETHER



Community Wellness Programs are rooted in suicide prevention and provide support for those affected by suicide and mental illness. The second annual Walk with Hope brought together community members affected by suicide for a reflective gathering and honored those lost to suicide.

Support Groups provide a relaxed and supportive space for peers to get together and discuss challenges.

- **779 community members engaged in support groups in 2025**

Mental Health Training increases public awareness and provides education around mental health topics.

- **29 mental health training sessions**
- **561 individuals trained**



## COMMUNITY OUTREACH

Building Hope attended 27 events, reaching out to thousands of community members about mental health services offered locally.



**“TO ME, BUILDING HOPE MEANS CONNECTION, PURPOSE, AND COLLABORATION. IT EMBODIES A GRASSROOTS EFFORT THAT NOT ONLY REDUCES BARRIERS TO CARE BUT ALSO STRENGTHENS THE BONDS BETWEEN PROVIDERS, AGENCIES, AND THE COMMUNITY. FOR THE COMMUNITY, IT MEANS AFFORDABLE, ACCESSIBLE, AND STIGMA-FREE MENTAL HEALTH SUPPORT.”**

# FACILITATING CONNECTION



## CONNECTEDNESS EVENTS

Free community events designed to improve emotional wellbeing and foster connection.



## FAMILY EVENTS

Launched in 2025 in response to community feedback and a need for gatherings geared towards bringing families together.



## HYPE EVENTS

Provide opportunities for youth aged 11-18 to gain self confidence and connection through free activities.



53

Connectedness  
Events

494

Participants



8

Family  
Events

90

Participants



43

Hype  
Events

367

Participants



**“BUILDING HOPE IS A VITAL PART OF SUMMIT COUNTY. IT’S AN ORGANIZATION THAT CONSISTENTLY STRENGTHENS BOTH THE QUALITY AND ACCESSIBILITY OF MENTAL HEALTH CARE FOR OUR COMMUNITY.”**

# SUPPORTING THE MENTAL HEALTH SYSTEM



**GROWING  
OUR PROVIDER  
NETWORK AND  
STRENGTHENING  
THE LOCAL  
MENTAL HEALTH  
SYSTEM**



**64**

## MINI GRANTS

Awarded to mental health providers to support professional development.



**||**

## PROVIDERS

Supported through billing and credentialing services, improving access and the ability for community members to utilize health insurance for mental health services.



**\$125,776**

Awarded in tuition assistance, supervision grants, and intern stipends

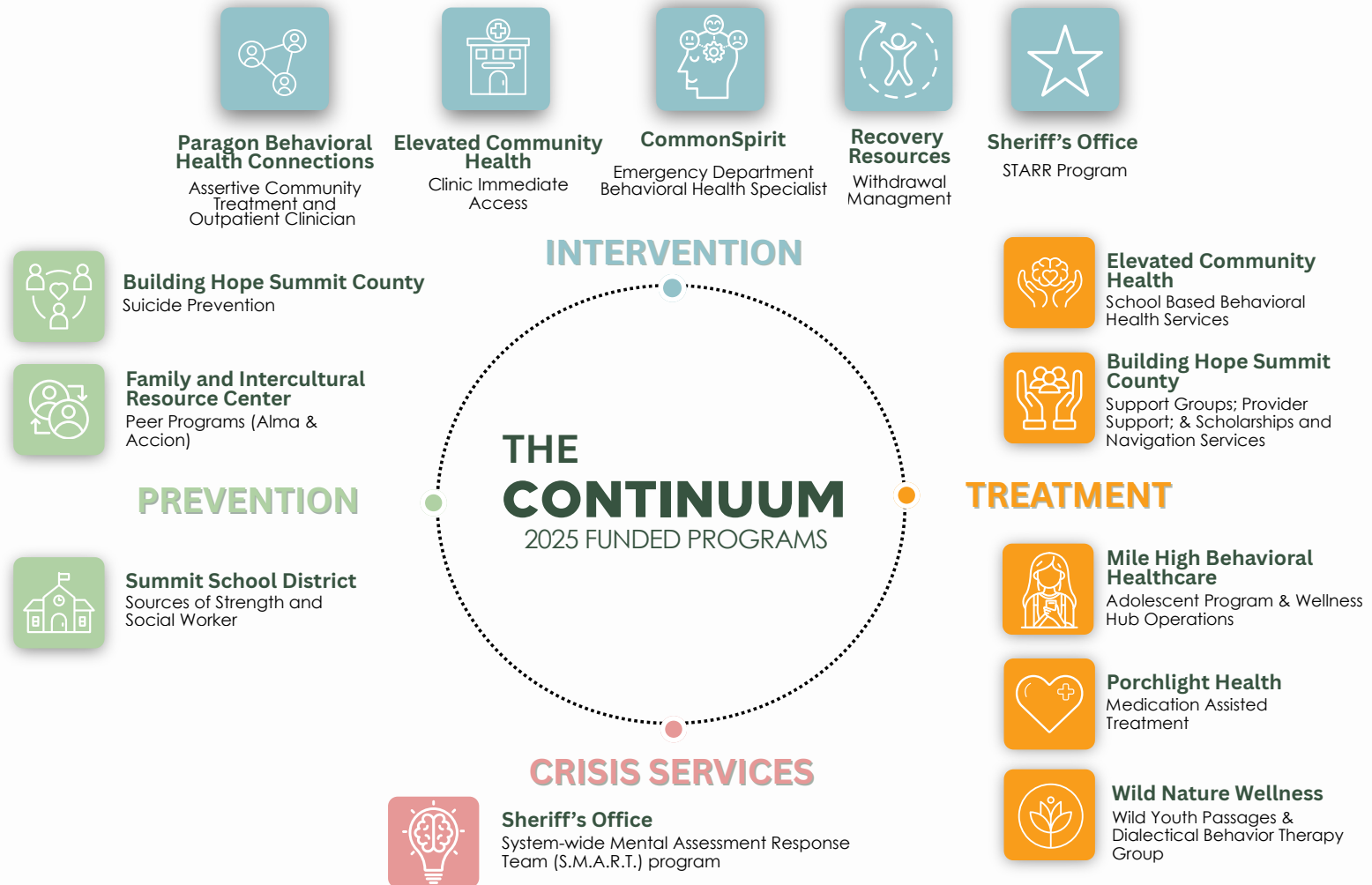


**“BUILDING HOPE HAS BEEN A VITAL SUPPORT IN MY JOURNEY AS A THERAPIST. THEIR FUNDING HAS ALLOWED ME TO PURSUE CONTINUING EDUCATION AND CERTIFICATIONS OVER SEVERAL YEARS, HELPING ME GROW BOTH EARLY IN MY CAREER AND AS I CONTINUE TO EXPAND MY EXPERTISE.”**



# STRONG FUTURE BEHAVIORAL HEALTH INITIATIVE

In November of 2018, Summit County voters passed **Referred Measure 1A Strong Future** with five separate funding components: mental health and suicide prevention services, affordable early childhood care and learning for local families and workers, wildfire prevention programs, recycling and waste diversion services, and necessary repairs and improvements to extend the useful life and accessibility of public buildings and community facilities.



Building Hope facilitates, organizes, and oversees the Strong Future Behavioral Health Citizens Advisory Committee, which ensures funding and services are focused on mental health across Summit County.

## STRONG FUTURE BEHAVIORAL HEALTH FUNDING AT WORK

Before Strong Future, Summit County's system of care was fragmented and siloed. Over the last six years, the Strong Future Behavioral Health Fund has bridged those gaps, evolving a scarce network into a robust, integrated system.

**Total Investment:** Over \$20 million distributed to date.

**Breadth of Reach:** Funding has supported 20+ distinct programs across 13 community organizations.

To ensure these taxpayer dollars are used effectively, the County partners with Building Hope to facilitate the Strong Future Behavioral Health Committee. This group of subject matter experts and advocates ensures high-level oversight by:

- Evaluating funding applications and making recommendations to the Board of County Commissioners.
- Monitoring performance through the review of quarterly recipient reports.
- Advocating for the evolution of behavioral health services throughout the region.

While Strong Future has provided a historic “bridge” for our behavioral health system, the need for sustainability is paramount. The infrastructure we have built is now an essential service for our workers and families.

### How you can help:

- **Stay Informed:** Review the Strong Future impact reports to see how 1A funds are moving the needle on local mental health.
- **Advocate:** Share the importance of these services with your neighbors to help us plan for a sustainable, permanent funding solution for the future.
- **Connect:** If you or someone you know needs support, reach out to Building Hope or our partner organizations funded by 1A Strong Future.



## BUILDING HOPE FUNDING

